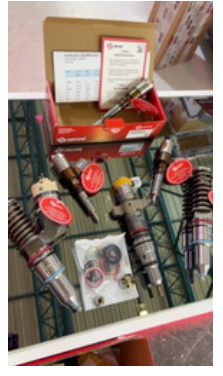


Common Rail Debut at Automechanika Istanbul

We once again had the opportunity to meet with our industry stakeholders at Automechanika Istanbul 2026, one of the largest international automotive aftermarket exhibitions in the region, bringing together markets from Türkiye, Europe, the Middle East, and North Africa.

The highlight of this year's exhibition was the official launch of our Common Rail product range. We showcased our portfolio of Common Rail injectors and spare parts compatible with Bosch, CAT, Perkins, Delphi, Denso, and Siemens systems. Live demonstrations of our Common Rail test equipment at our booth attracted significant attention from visitors throughout the event.



Sensei Returns to CTT Expo Moscow

We returned to participate in CTT Expo Moscow, widely regarded as the largest international construction equipment exhibition in Russia and Eastern Europe.

The exhibition provided an excellent opportunity to once again present Sensei Spare Parts' extensive product range, including Yanmar and Kubota spare parts solutions, Common Rail injectors, and injector spare parts, to industry professionals from around the world.

The strong interest shown at our booth once again demonstrated the strong position of our products in the international market.

